

ELIMINATING UNNECESSARY LINES

Most shortcut methods are simply the standard method of layout with all the unnecessary lines eliminated. Many lines can be eliminated when finding the true lengths on patterns for square to rounds.

Figure 1 shows a plan view of a square to round, and a drawing showing how the true lengths are found by the standard method of layout.

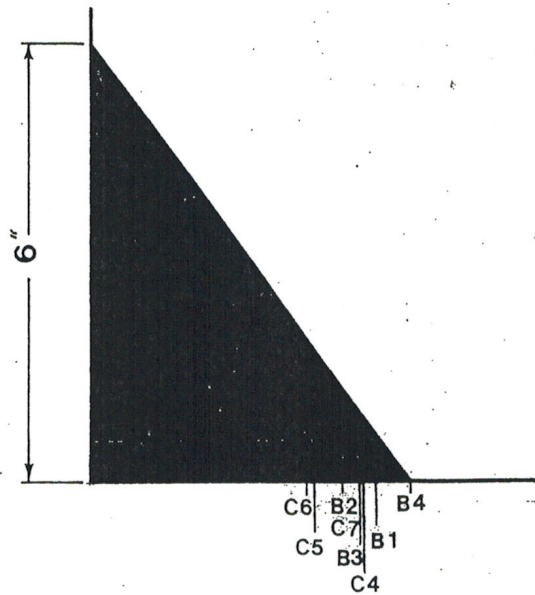
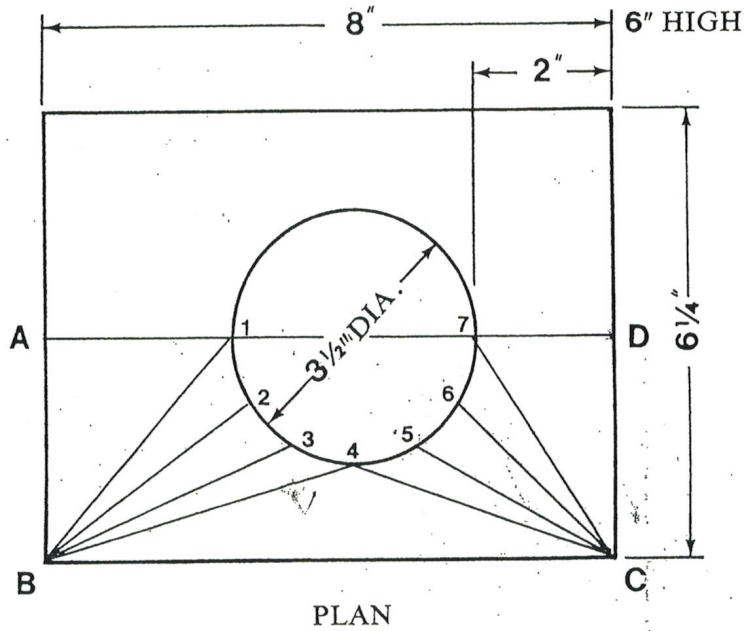
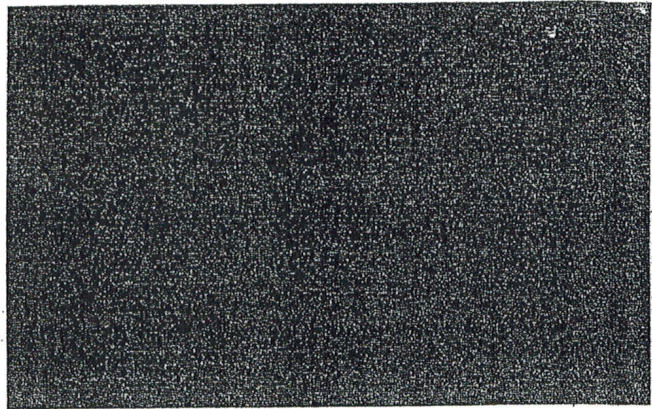


Fig. 1: Finding square to round true lengths by the standard method